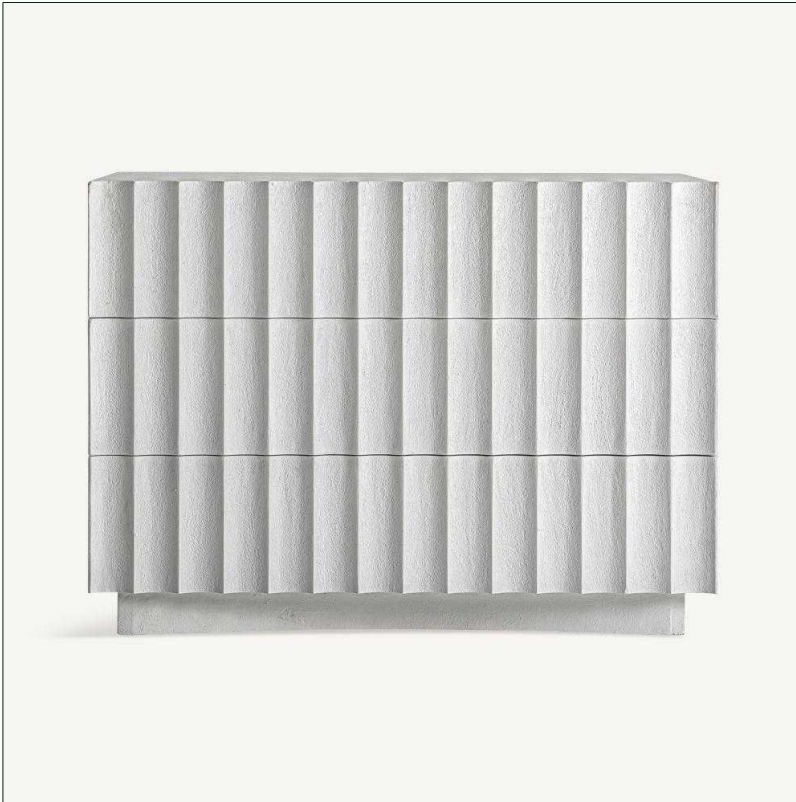


# VICAL

## Ref. 37085 SAUNDBY CHEST OF DRAWERS



### COMPOSITION

Mango wood in white

### DIMENSIONS

Measurements (L x W x H):  
110 x 50 x 81 cm.

Weight:  
89.7 kg.

Number of drawers:  
3

Interior drawers:  
99X39X18 cm.

Legs dimensions:  
7,5 cm.

Tabletop thickness:  
2.5 cm.

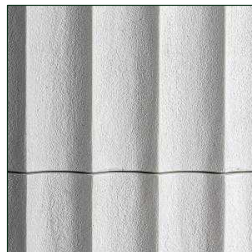
Type of legs:  
Fixed

Maximum supported Weight:  
40 kg.

Included:  
Wall hanging system.

### Cleaning instructions:

Clean daily with a synthetic cloth. Clean with mix of cold water and mild soap. Dry with a cotton cloth. If wood is varnished you can add a small spoon of vinegar to the mix in order to recover its brightness.



Packaging	Type	Units/Box	Content	Volume	Length	Wide	High	Weight (Kg)
	CARTON	1	PRODUCT	0.6403	1.20	58	92	95,2