

VICAL

Ref. 36716 HALKE CEILING LAMP



COMPOSITION

Iron in gold

DIMENSIONS

Measurements (length x width x height):
70 x 51 x 30 cm.

Weight:
3,5 kg.

Bulb base:
E27

Wattage:
5

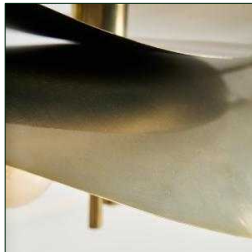
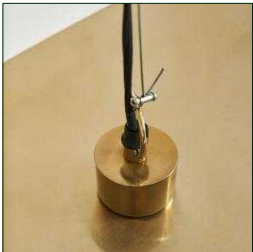
Number of bulbs:
2

Trim size:
10X10X2.5

Cable length:
100 cm.

Voltage: 220-240v.

Not Included:
Bulbs.



Packaging	Type	Units/Box	Content	Volume	Length	Wide	High	Weigth (Kg)
	CARTON	1	PRODUCT	0.1598	74	54	40	7,0