

VICAL

Ref. 36707 MIRROR



COMPOSITION

Iron in black, combined with mirror

DIMENSIONS

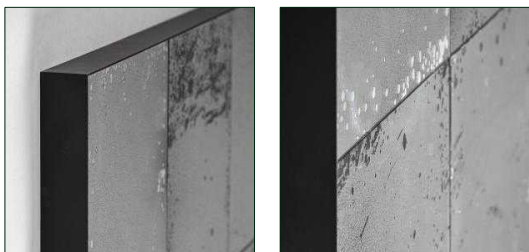
Measurements (length x width x height):
112 x 4 x 112 cm.

Weight:
19,2 kg.

Frame:
0.2 cm.

Mirror size:
111.6X111.6 cm.

Anchor mode:
anilla



Packaging	Type	Units/Box	Content	Volume	Length	Wide	High	Weigth (Kg)
	CARTON	1	PRODUCT	0.1392	1.18	10	1.18	21,6