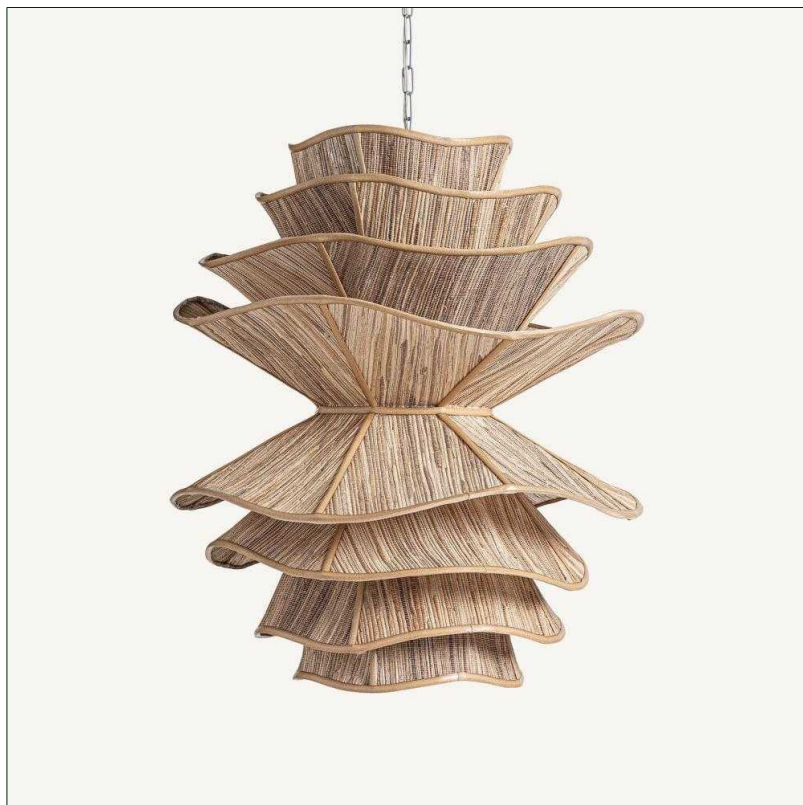


VICAL

Ref. 34253 CEILING LAMP



COMPOSITION

Coconut wood in brown

DIMENSIONS

Measurements (length x width x height):
63 x 63 x 70 cm.

Weight:
2,5 kg.

Bulb base:
E27

Wattage:
40W

Number of bulbs:
1

Trim size:
12X12X3

Cable length:
100 cm.

Voltage: 220-240V 50-60Hzv.

Included:
wall system.

Not Included:
bulb.



Packaging	Type	Units/Box	Content	Volume	Length	Wide	High	Weigth (Kg)
	CARTON	1	PRODUCT	0.3398	66	66	78	4,3