

374044-MSL

LOUIS 1,5-SEATER WITH ARM LEFT COARSE MELANGE SAGE

LEAF



wozod

Packages 1

Country of origin LT

Assembly required Assembly required

Intrastat Code 94016100

Additional description

- Our most versatile sofa series ever
- Endlessly combinable in size, colour and material
- Simple and invisible to link
- H 73 cm x W 122 cm x D 90 cm

The Exclusive collection of Dutch interior design brand WOOD has been enriched with the multifunctional sofa series Louis. The modular Louis elements are carefully put together in various colour themes and a wide range of fabric choices. So mix and match your dream sofa as extensively and colourfully as you like. Go all the way with the Unlimited Louis!

Material

This Louis element is upholstered in our Orari coarse woven fabric. The fabric has a soft yet firm grip, a subtle colour nuance and a coarse weave pattern. Orari is composed of 94% polyester and 6% nylon. The coarsely woven fabric is suitable for very intensive use (Martindale 60,000). Orari is known as a very colourfast fabric and will not pill easily.

Dimensions

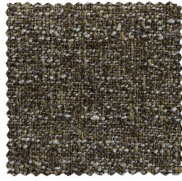
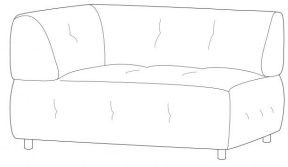
- Height: 73 cm
- Width: 122 cm
- Depth: 90 cm



+31 88 96 66 300

info@deekhoorn.com

www.deekhoorn.com



-
- Banister thickness: 32 cm
 - Leg height: 9 ...