

# Operation Manual

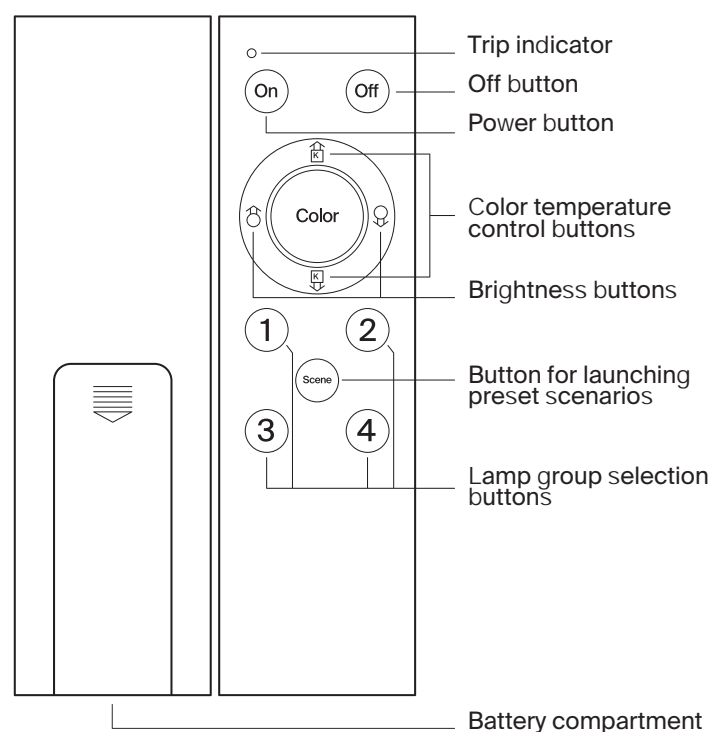
Remote control for Maytoni lamps of Exility collection

## Technical characteristics

Model	<b>DRC034-B</b>
Supply voltage	<b>3B</b>
Maximum number of lamps in 1 group	<b>50</b>
Number of connected groups	<b>4</b>
The principle of communication with devices	<b>Bluetooth</b>
Operating range Remote control	<b>10m</b>
Transmitter radiation power	<b>10mW</b>
Remote control battery	<b>2xAAA</b>
Degree of protection against moisture and dust	<b>IP20</b>
Operating temperature	<b>0°C...+60°C</b>
Housing material	<b>Soft-touch ABS</b>
Color	<b>Black</b>
Overall dimensions (LxWxH)	<b>150*37*15mm</b>

## Operating rules

- + Remove the remote control from the package, carry out a visual inspection: the product should not have visual defects and other damage. Check that you have all the required equipment.
- + Before use, it is necessary to install the lamps on a de-energized busbar. Download the Maytoni Smart app for your platform via Google Play or the App Store, register an account with it and add existing fixtures through its interface (see lighting manual).
- + Insert the batteries into the remote control. To do this, slide the battery cover down and remove it on the back of the device, then place the batteries in it, following the polarity. Place the cover back.
- + Use the Maytoni Smart app interface to link your remote control to your track lighting system. Hold down the On and Off buttons at the same time until the operation indicator starts flashing. After that, start the process of pairing the device with the system in the application in automatic mode.
- + After completing the pairing process, group your existing luminaires using the application interface. Then it becomes available to control the track system using the remote control.



The device of the remote control and the purpose of the buttons

## Description and purpose of the device

This device is designed for remote control of lamps connected to the Maytoni magnetic track of the Exility collection. The device allows you to turn on / off, adjust the brightness, color temperature, run pre-installed scenarios, control lamps in groups. It is possible to divide the existing lamps into 4 groups. Control is made via Bluetooth. Customization of all available functions can be possible via the Maytoni Smart app.

maytoni.de

# Present illuminated+

+Present in light

## Equipment:

Remote Control  
User's manual  
AAAx2 battery

## Attention!

- + Replace used batteries in a timely manner.и ресурсэлементами питания.
- + It is not recommended to use the product with a damaged case.
- + The device is intended for indoor use only.
- + It is forbidden to use the product in rooms with high humidity and with a high content of dust or aerosol particles in the air.



Learn more about the Technical collections

# Note:

It is possible to connect several remote controls to one track lighting system. It should be remembered that Your smartphone must be in a Wi-Fi network for correct work of the devices, as it acts as a gateway. You should additionally connect a gateway (article) to the track system in order to ensure the correct work for the lighting fixtures regardless of the presence of a smartphone in the Wi-Fi network, which will relay the signal from the remote control to the lamps and save the settings using the Maytoni Smart application interface.

# Troubleshooting:



Malfunction	Cause	Elimination Method
The device is not connected to the system.	No signal from Wi-Fi router.	Check the settings of your Wi-Fi network, make sure it operates at 2.4 GHz. There should be no restrictions in the network settings for connecting such devices.
	Remote control malfunction.	Make sure that the command progress indicator works when pressed, if this does not happen, replace the device with a working one.
The lamp works, but commands from the remote control do not trigger.	The distance to control the system is too long.	The system cannot be controlled at a distance of more than 10m. The Bluetooth signal will be too weak.
	The battery is not installed in the remote control, or it is discharged.	Install the battery in the remote control or replace it with a new one.

Storage

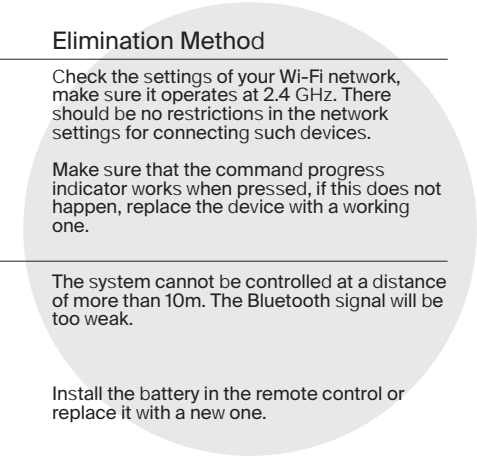
The goods are stored in packaging and indoors in the absence of an aggressive environment. Storage temperature range from -20°C to +70°C and relative humidity of the air is 95%. Direct exposure to moisture is not allowed.

Transportation

The packaged product is suitable for transportation by sea, rail, road and air.

Disposal

Do not dispose the product with the regular household waste!  
Products must be disposed according to the directive on electrical and electronic devices at local collection points for such devices!



### MANUFACTURER:

Maytoni GmbH, Feldstiege 98, Münster, Germany, 48161

### IMPORTER:

Maytoni GmbH, Feldstiege 98, Münster, Germany, 48161

Developed in Germany.  
Made in China.

# Warranty

### Warranty

- For warranty repair of the product, contact the place of purchase.
- The manufacturing company provides a 3-year warranty. The warranty starts from the moment you purchase the product from the distributor/importer and fill out the warranty card.
- The warranty is not valid in cases of: mechanical damage, violation of the installation and operation conditions, as well as unauthorized changes to the product.
- Consumable parts (light bulbs, fasteners, cutters, etc.) are not covered by the manufacturer's warranty. The manufacturer reserves the right to make changes to the design and configuration of the product and improvements that do not impair the technical characteristics of the product without prior notice.
- Keep all packing until a successful installation and retain the instructions for the future reference
- Standards, Regulations, Requirements EC is on the first place.

### Warranty restrictions:

If the product has been used for purposes that do not correspond to its intended use; the defect arose after the transfer of the goods to the consumer and is caused by incorrect or careless handling, non-compliance with the requirements given in this manual. And also in cases of force majeure, including: fire, flood, high-voltage discharges and other natural disasters, accidents and deliberate actions of third parties that caused the product to malfunction.

○ Technical

