

BRETEUIL CHEST OF DRAWERS



COMPOSITION

Mango wood combined with iron.

DIMENSIONS

Measurements (length x width x height):
137 x 45 x 85 cm.

Weight:
60,2 kg.

Number of drawers:
4

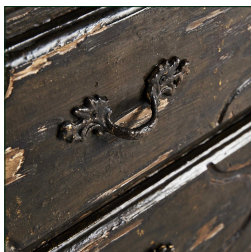
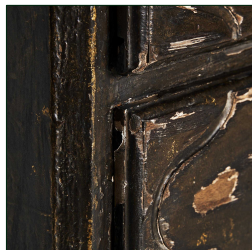
Interior drawers:
2 de 43x36x15 y 2 de 114x35x15 cm.

Legs dimensions:
3,5x3,5x9 cm.

Space between legs:
123x34 cm.

Board thickness:
2,5 cm.

Supported Weight:
60 kg.



Packaging	Type	Units/Box	Content	Volume	Length	Wide	High	Weigth (Kg)
	CARTON	1	PRODUCT	0.6773	1.42	53	90	67,6