

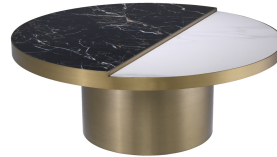


E I C H H O L T Z

EST. 1992

SPECIFICATION SHEET

Item no.	114120
Item description	Coffee Table Excelsior brushed brass finish Brushed brass finish ceramic marble look
Suitable for	Indoor use/dry locations only
Net weight (kg)	46.6



DIMENSIONS

Item dimensions (cm)	∅ 88 x H. 35,5 cm
Item dimensions (inch)	34.65" dia x 13.98" H

SPECIFICATIONS

Material(s)	114120A:	Stainless steel
	114120B:	Ceramic Stainless steel

LOGISTIC INFORMATION

114120A - Coffee Table Excelsior brushed brass finish-Stand - 1pc(s)

Carton dimensions (m)	0.46 x 0.46 x 0.31
Volume (cbm)	0.0656
Gross weight (kg)	10.60

114120B - Coffee Table Excelsior brushed brass finish - Top - 1pc(s)

Carton dimensions (m)	0.96 x 0.96 x 0.14
Volume (cbm)	0.1290
Gross weight (kg)	36.00

HS code	94032080
Country of origin	China