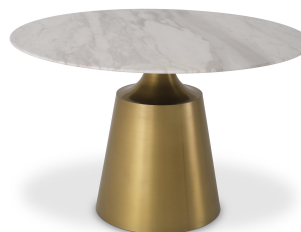




E I C H H O L T Z

SPECIFICATION SHEET

Item no.	115541
Item description	Dining Table Nathan brushed brass finish Brushed brass finish white marble
Suitable for	Indoor use/dry locations only
Net weight (kg)	93,9



DIMENSIONS

Item dimensions (cm)	ø 120 x H. 77 cm
Item dimensions (inch)	47.24" dia x 30.31" H
Base dimensions (cm)	ø 48 x H. 53 cm
Base dimensions (inch)	18.9" dia x 20.87" H

SPECIFICATIONS

Material(s)	115541A: Stainless steel
	115541B: Marble
	115541C: Iron

LOGISTIC INFORMATION

115541A - Dining Table Nathan brushed brass finish - Base - 1pc(s)

Carton dimensions (m)	0,67 x 0,67 x 0,75
Volume (cbm)	0,3367
Gross weight (kg)	32,00

115541B - Dining Table Nathan brushed brass fi - Marble top - 1pc(s)

Carton dimensions (m)	1,27 x 1,27 x 0,09
Volume (cbm)	0,1452
Gross weight (kg)	66,00

115541C - Dining Table Nathan brushed brass fi - Frame - 1pc(s)

Carton dimensions (m)	0,72 x 0,72 x 0,09
Volume (cbm)	0,0467
Gross weight (kg)	5,50

HS code	94032080
Country of origin	China