

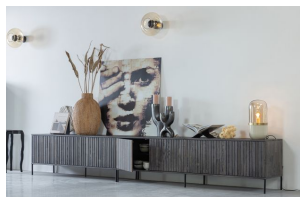
373473-E

NEW GRAVURE TV-STAND 150 CM ASH ESPRESSO [fsc]



The mark of responsible forestry

woood



Packages

2

Country of origin

NL

Assembly required

Assembly required

Additional description

- Generous TV cabinet with graphic relief doors
- Made of ash wood with black metal base
- Subtle furniture with many storage options
- H 56 cm x W 150 cm x D 44 cm

Our successful Gravure series in a new jacket! This Gravure New TV furniture, from the collection of the Dutch interior design brand WOODOOD, is available in two sizes: 100 cm wide and 150 cm wide. Gravure New TV furniture is made of finger jointed ash and finished with a brown espresso-coloured stain. The interior is made of black chipboard. The legs are made of metal with a black coating. The Gravure New TV cabinet has two doors with a silent push-to-open system.

The Gravure New TV cabinet is 56 cm high, 150 cm wide and 44 cm deep. The three doors are each 37 cm high, 50 cm wide and 2 cm thick. The line pattern on the handleless door fronts gives the Gravure its attractive, recognisable look. The unit features three removable shelves which are also height-adjustable. The shelves create six compartments measuring 18x50x42 cm (height x width x depth). The metal legs are 15 cm high and have a diameter (ø) of 2 cm. Behind each door a circle is milled out for the wiring (ø 50 cm), this is 40 cm high from the ground.

Are you combining several New Engraving...



 **DE EEEKHOORN**
dutch furniture

+31 88 96 66 300

info@deekhoorn.com

www.deekhoorn.com